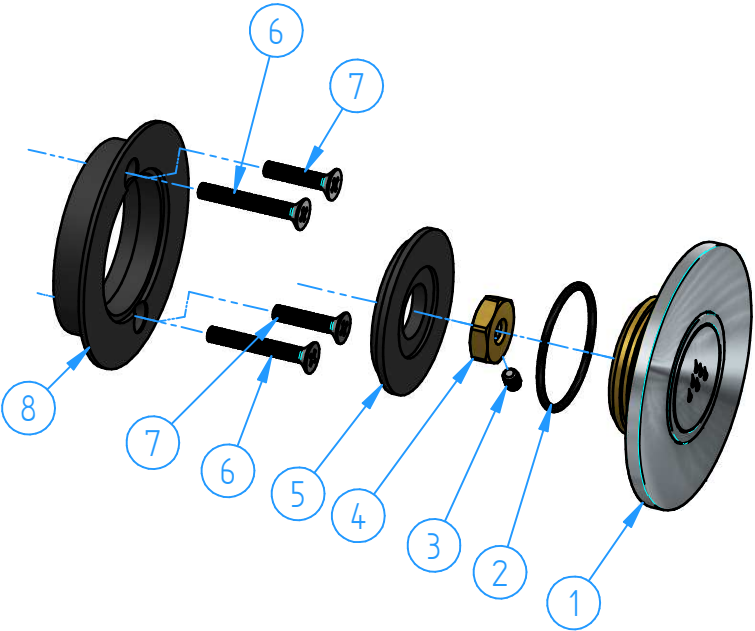
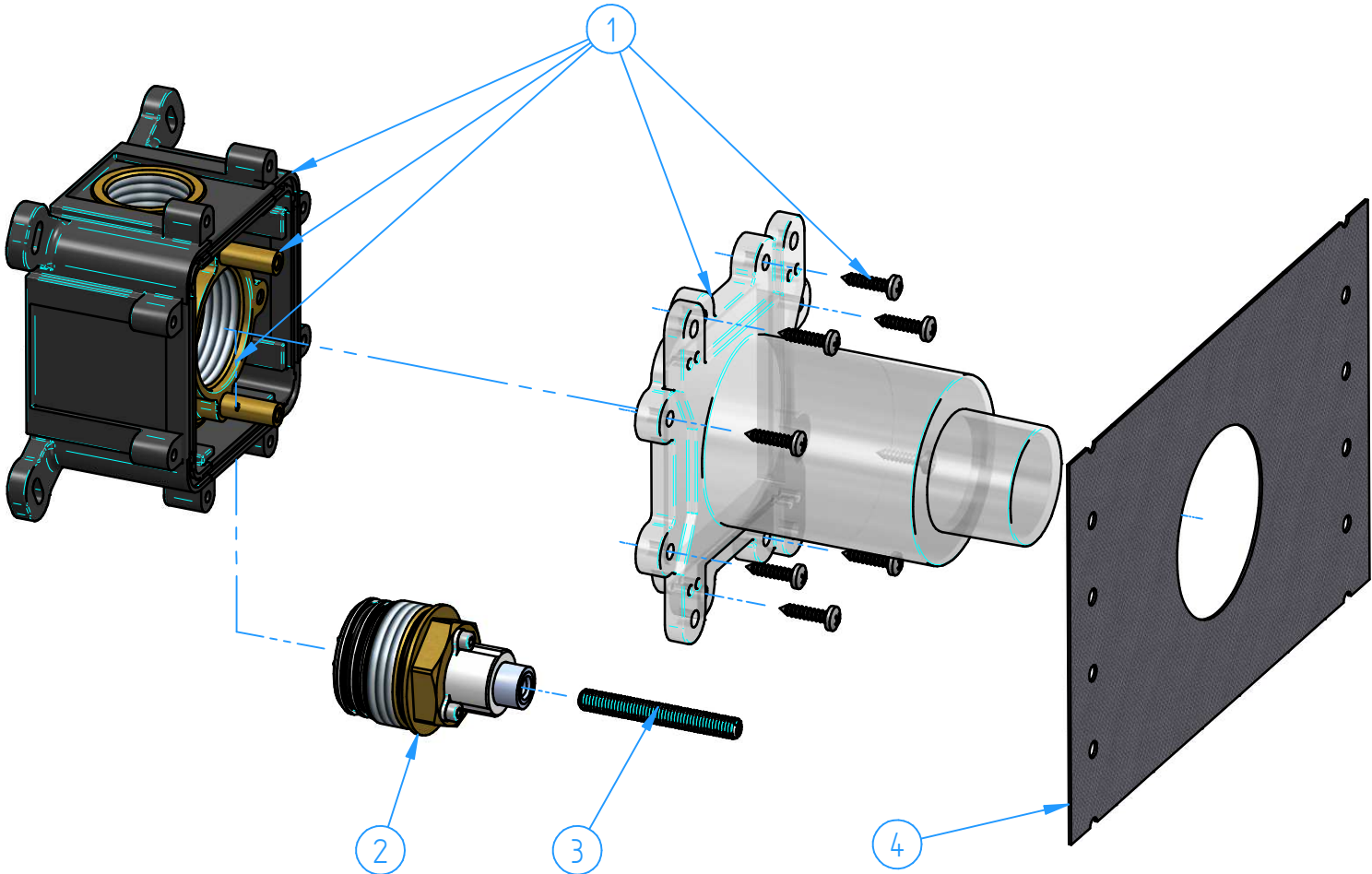


| | | | |
|-----------|----------------|-----------------------------------|-----|
| 2 | CB7PB068EXT-00 | Trim parts for CB7PB7068-CB7PB069 | 1 |
| 1 | HBCB7068PB-00 | Concealed set for CB7PB7068 | 1 |
| ID Number | Code | Description | Pcs |



| | | | |
|-----------|---------------|---------------------------------|-----|
| 8 | CB7PB7068-04 | Plastic support for push button | 1 |
| 7 | CB7PB7068-06 | Screw M4x20 | 2 |
| 6 | CB7PB7068-05 | Screw M4x30 | 2 |
| 5 | CB7PB7068-03 | Template | 1 |
| 4 | CB7PB7068-01 | Nut for regulation | 1 |
| 3 | CB7PB7068-02 | Dowel M4x6 | 1 |
| 2 | CB7068-06 | O.ring 31.47x1.78 | 1 |
| 1 | CB7PB7068-001 | Push button | 1 |
| ID Number | Code | Description | Pcs |



| | | | |
|-----------|-----------------|-----------------------|-----|
| 4 | HBCB0768-02 | Wall gasket | 1 |
| 3 | HBCB7PB7068-01 | Plastic threaded rod | 1 |
| 2 | HBCB7PB7068-002 | Push button cartridge | 1 |
| 1 | HBCB7PB7068-001 | Box | 1 |
| ID Number | Code | Description | Pcs |

| | | | | |
|--|---------------|---------------------|----------------------|--------|
| | | | Sheet | 1 of 1 |
| | | | Scale | 1:2 |
| N° | | | REVIEW | Date |
| Description | | | Material | |
| Push-button concealed tap | | | Weight | |
| | | | 0 kg | |
| Code | Date of issue | Chamfers not quoted | Finishing | |
| CB7PB068-00 | 16/04/2020 | 0.5x45° | SM LU CR | |
| This drawing is property reserved of Hotbath Srl. | | | hotbath | |
| Without express authorization, the copying, distribution and utilization of this document as well as the communication to others is prohibited | | | italian bathroomware | |