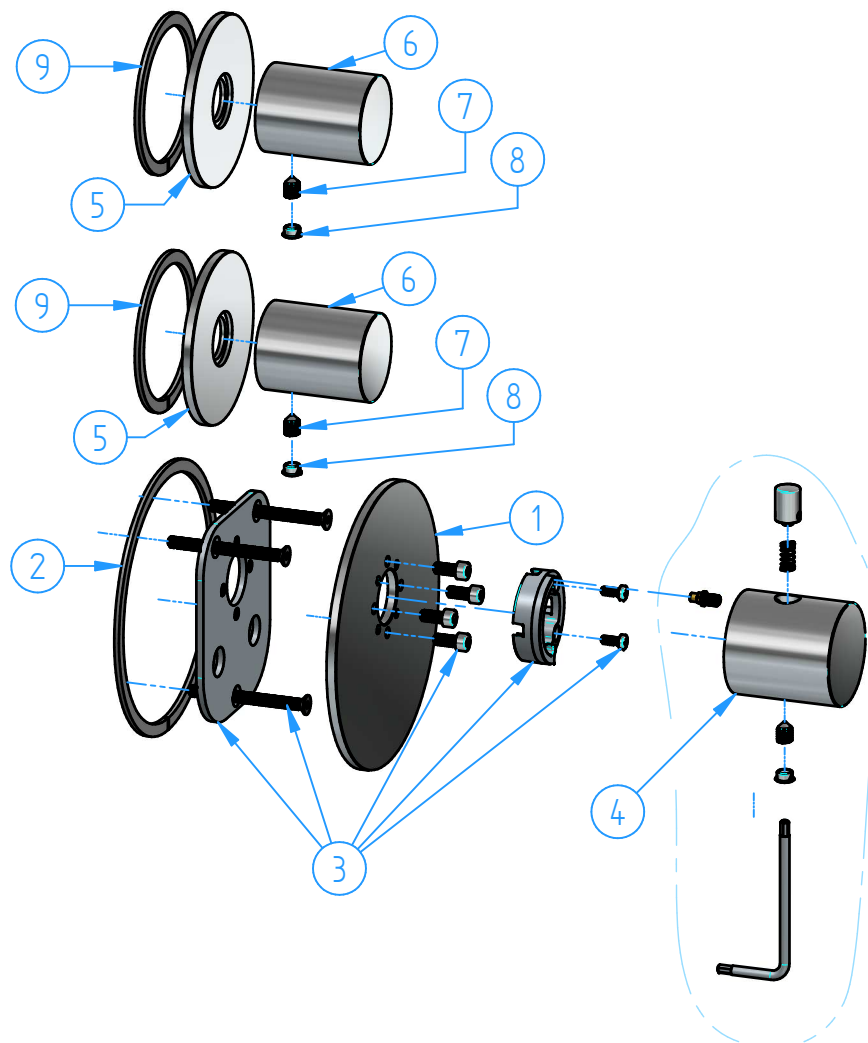
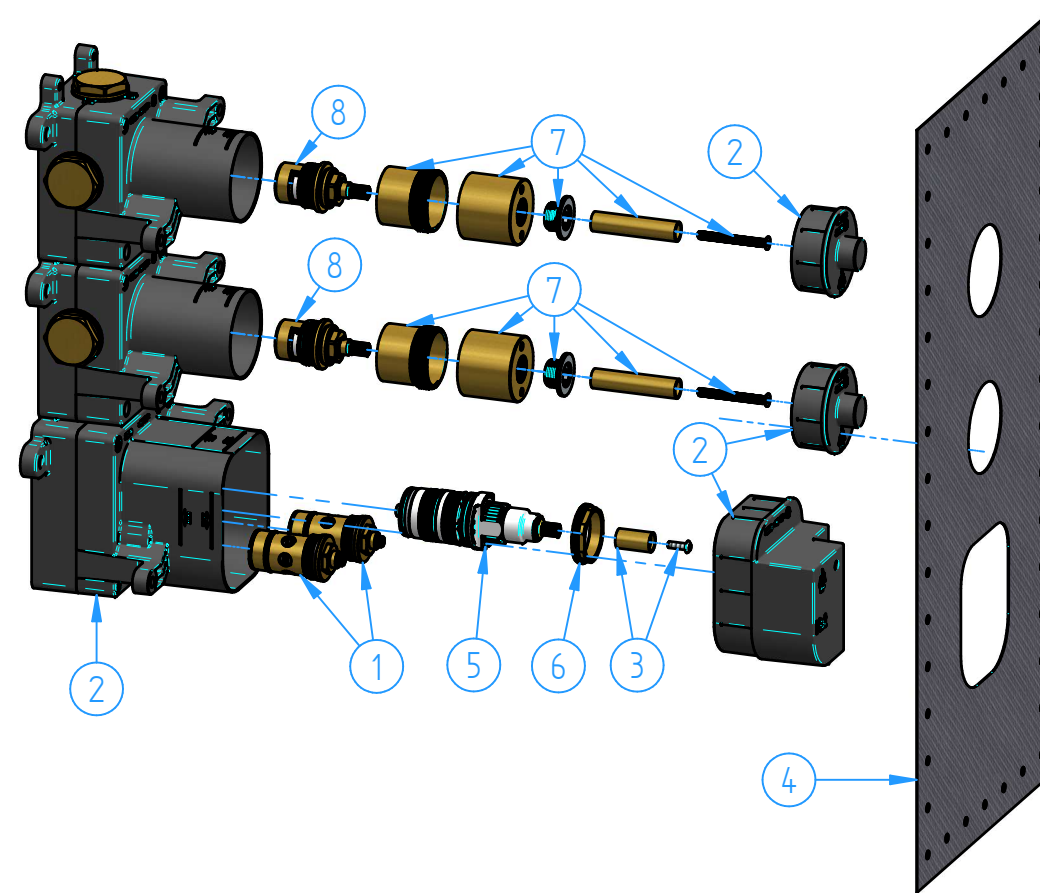


| | | | |
|----|---------------|--|-----|
| 2 | ARHF012EXT-00 | Trim parts for ARHR2 | 1 |
| 1 | MHF002-00 | Concealed parts for MHR2, MHRQ2, ARHR2, GLF012 | 1 |
| ID | Code | Description | Pcs |



| | | | |
|----|-------------|-------------------------|-----|
| 9 | MHF011-10 | Gasket | 2 |
| 8 | MHF011-06 | Cap | 2 |
| 7 | MHF011-07 | Grub screw | 2 |
| 6 | ARHF011-01 | Handle body | 2 |
| 5 | ARHF011-04 | Tap flange | 2 |
| 4 | ARHF001-002 | Thermostatic handle kit | 1 |
| 3 | MHF001-010 | Thermostatic cover kit | 1 |
| 2 | MHF011-12 | Gasket | 1 |
| 1 | ARHF011-05 | Thermostatic flange | 1 |
| ID | Code | Description | Pcs |



| | | | |
|----|------------|---------------------------------------|-----|
| 8 | MHF001-002 | Headwork | 2 |
| 7 | MHF001-005 | Headwork connection set | 2 |
| 6 | MHF001-10 | Locking nut for thermostati cartridge | 1 |
| 5 | MHF001-001 | Thermostatic cartridge | 1 |
| 4 | MHF002-01 | Wall gasket | 1 |
| 3 | MHF001-006 | Thermostatic cartridge connection set | 1 |
| 2 | MHF002-001 | Preassembled set for MHF002 | 1 |
| 1 | MHF001-004 | Check valve | 2 |
| ID | Code | Description | Pcs |

| | | | |
|---|-----------------------------|--------------------------------|--|
| | | Sheet 1 of 1 | |
| N° REVIEW | | Date | Scale 1:3 |
| Description | | | Material |
| ARHR2 High Flow concealed thermostatic mixer, with 2 stop valves | | | Weight 0 kg |
| Code ARHR2-00 | Date of issue 19/11/2021 | Chamfers not quoted 0.5x45° | Finishing SM LU CR Grinding Polishing GN |
| This drawing is property reserved of Hotbath Srl. Without express authorization, the copying, distribution and utilization of this document as well as the communication to others is prohibited | | | |
| hotbath italian bathroomware | | | |